

2-6 Special Functions

Step function

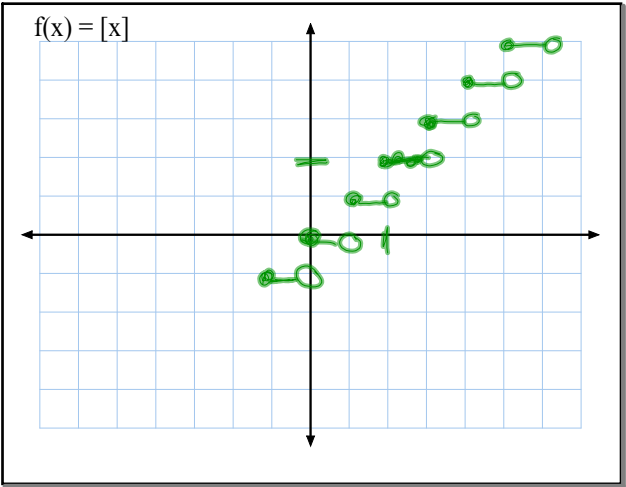
$f(x) = [x]$

The greatest integer function--the greatest integer less than or equal to x.

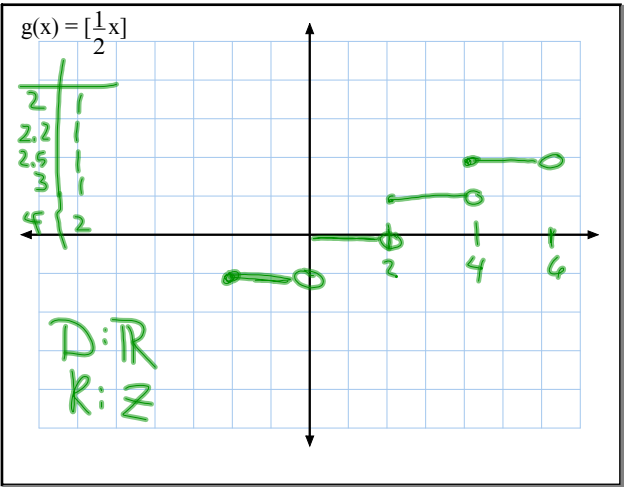
x	$f(x) = [x]$
2	2
2.1	2
2.5	2
2.9	2
3	3

OUTLOOK.EXE

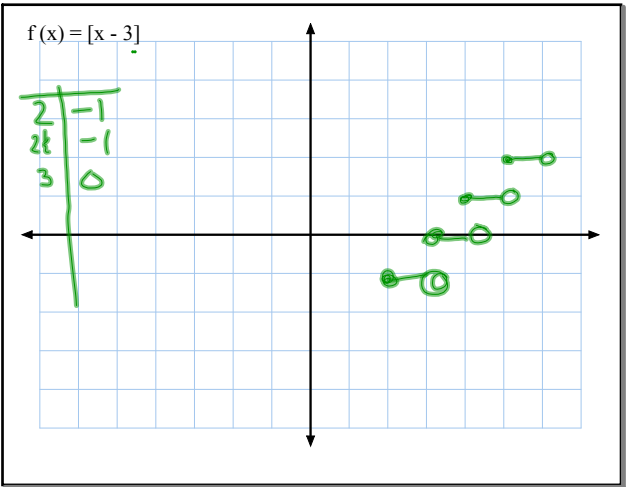
Oct 9-10:43 AM



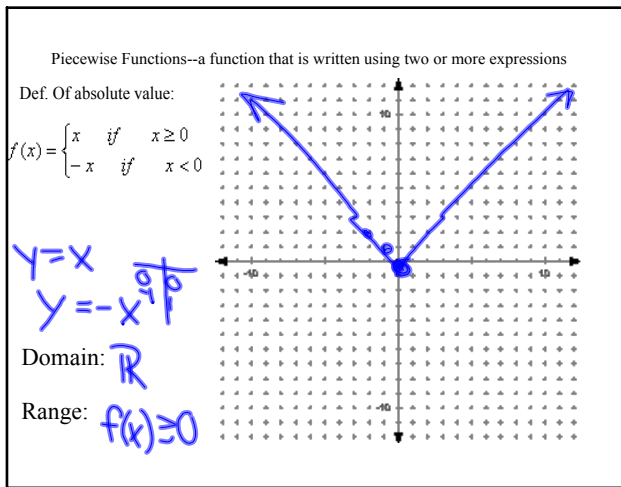
Oct 9-10:48 AM



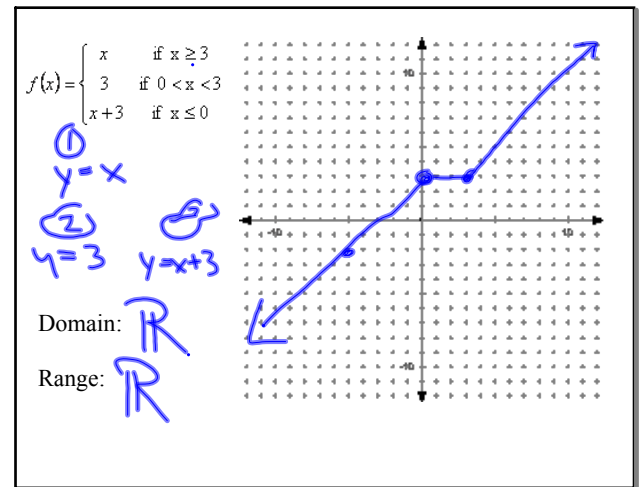
Oct 9-10:48 AM



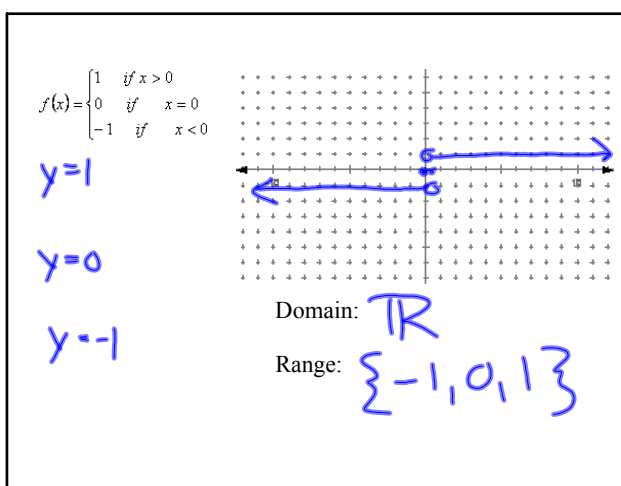
Oct 9-10:48 AM



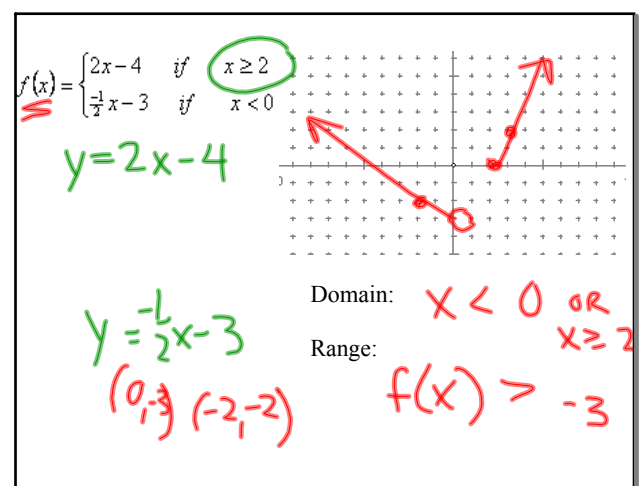
Oct 9-10:53 AM



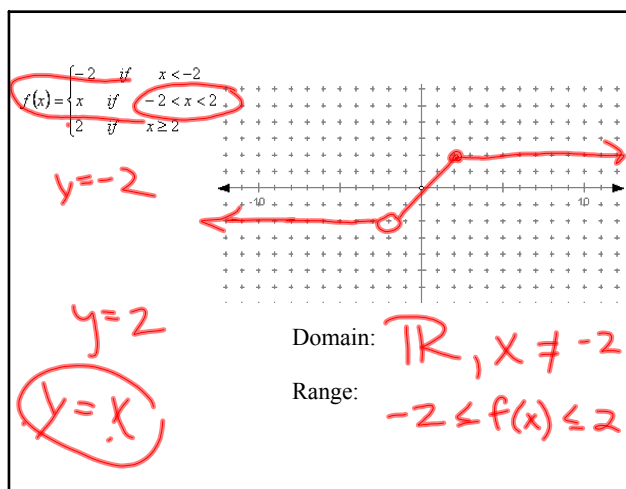
Oct 9-10:56 AM



Oct 9-10:58 AM



Oct 9-10:59 AM



Oct 9-10:59 AM

HW
 p.94
 22-24, 26-29, 38-42

Oct 9-11:03 AM